

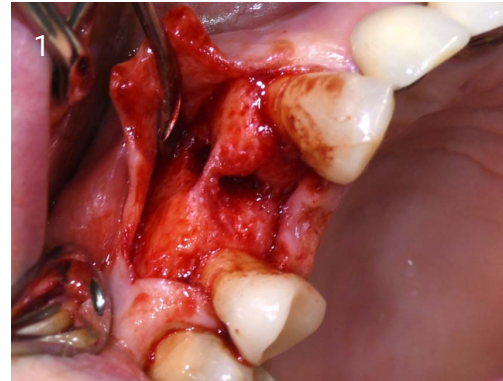
Background

Patient: 68 years old, good general health.

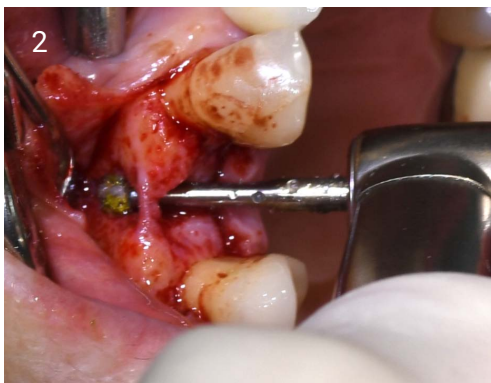
Tooth 14 slightly increased mobility, tenderness and bite pain.

Suspected root fracture.

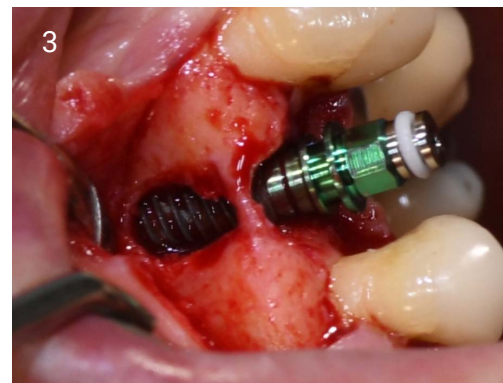
Case from: Dr. med. Dr. med dent. Oliver Lys, Switzerland



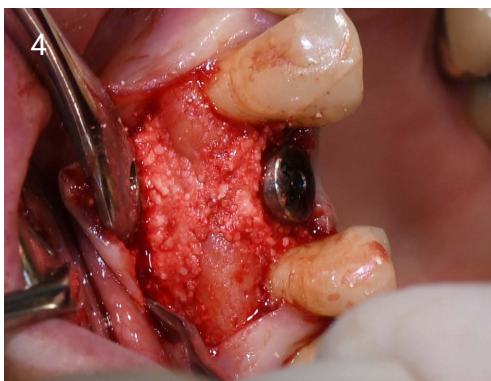
1. Bone defect with fenestration after extraction.



2. Complete removal of granulation tissue with EthOss® Degrgranulation Burs.



3. Implant with mount, bone defect visible.



4. Bone defect filled (and modelled) with EthOss®.



5. Closure with single sutures.



6. Soft tissue healing 16 weeks following graft procedure.



7. Final result at 16 weeks.



8. Initial x-ray - tooth 14 periapical lesion.



9. X-ray immediately after extraction with reference ball.



10. X-ray at implant placement.



11. X ray after 16 weeks showing stable bone.